



327 QUAKER MEETINGHOUSE ROAD, EAST SANDWICH



Zoning Allows Commercial, Single-Family, Religious Use & More

Total space: 9,312 sq. ft. including:

- ◇ First Floor 4,104 sq. ft. with an abundance of sunlight. Includes a combination of open rooms, private offices, 3 bathrooms & large, full kitchen.
- ◇ Second Floor: 860 wide open, finished space ‘
- ◇ Lower level walk-out space: 4,104 sq. ft.
- ◇ 1,800 sq.ft. Barn plus a shed

Features:

- ◇ Gas FHA heat and AC on all 3 levels
- ◇ Commercial Fire alarm system with lighted exit signs, sirens, strobes and auto-closing doors
- ◇ 3-phase and 2-phase electric
- ◇ CAT-E wiring. Set up for generator

RD Zoning allows for uses including but not limited to multi-family, home occupation, assisted living, contractor’s yard, medical offices and outdoor recreation.

Many other uses allowed by special permit. 2.03 acre lot backs up to conservation land.

One third of a mile from the Mid-Cape Highway, Exit 3.

ASKING \$950,000

Exclusively Listed by Ali Maloney- AMG Realty

Bus: 508.362.3323

Cell: 774.836.0347

aamaloney@comcast.net

The information contained herein is believed to be accurate, and has been derived from sources deemed reliable. The providers of this package expressly disclaim any and all liability, express or implied for any information, representations, projections, contained herein, or for any omissions from the document, including, but not limited to all other forms of documentation that may be communicated to any party during the course of evaluating this transaction.

327 QUAKER MEETINGHOUSE ROAD, EAST SANDWICH



Above— The main, ranch-style structure connects to a 2,208 sf, 2-story structure that was constructed circa 2003. Six separate means of egress into/ out of the building.



Above— The property offers a large, fenced-in back yard. The acreage extends beyond the yard. The current owners, by their own choice, did not pave the parking areas or cut down the trees, preferring to leave the lot mostly in its natural state.



327 QUAKER MEETINGHOUSE ROAD, EAST SANDWICH



Left -

Kitchen large enough to accommodate an island or table, has an oven and gas cook top, dishwasher, and three side-by-side windows.

The property underwent a major renovation in 2003-2004, including the installation of vinyl, wood-like flooring (Quik-Step) throughout. All new doors, windows, lighting, electrical, data and more.



Left -

Plenty of light by the glass panel doors, large windows, interior transom windows, and ceiling lighting throughout.

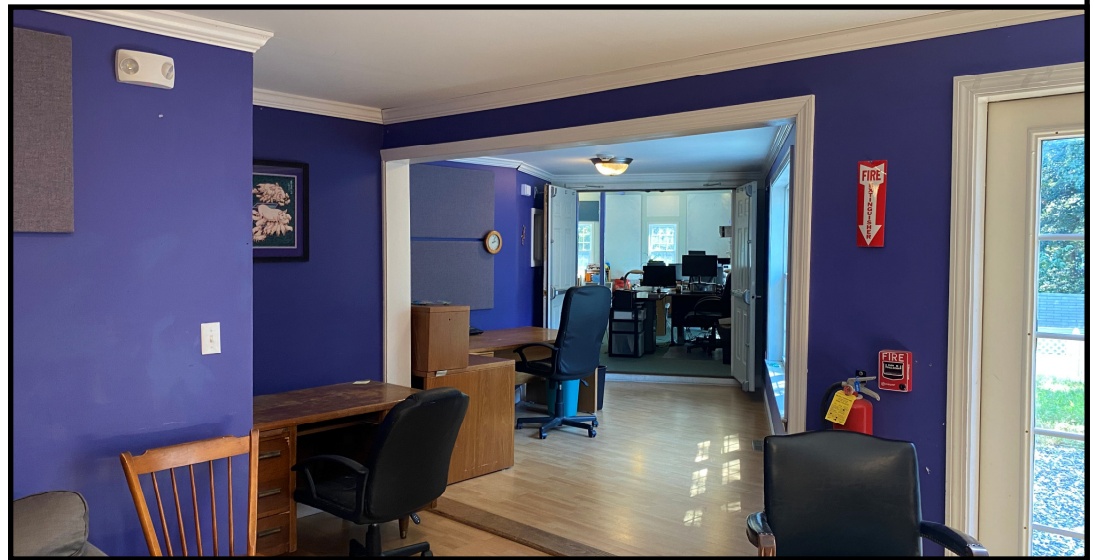


327 QUAKER MEETINGHOUSE ROAD, EAST SANDWICH



Left– First floor of the addition on the east side is wide open with 10'+ ceiling height. Windows on 3 sides. Data and phone wiring throughout the building.

First floor is bright, has high ceilings. Shown to right is where the main building connects to the two-story addition. Below, the main entryway.



327 QUAKER MEETINGHOUSE ROAD, EAST SANDWICH



Left- Conference room in the lower level offers sound proofing for private meetings, as well as data drops in floor and walls. Lower level is finished, heated, cooled, alarmed and wired for data .

Right - Lower level room with tall windows. Below left- Lower level bath Lower right-Lower level washer/

